

LODY'S CREATIONS

Counted Thread Designs by Lody Steward

MG4 - FOB

Size: 27h x 27w stitches

Symbol Keys

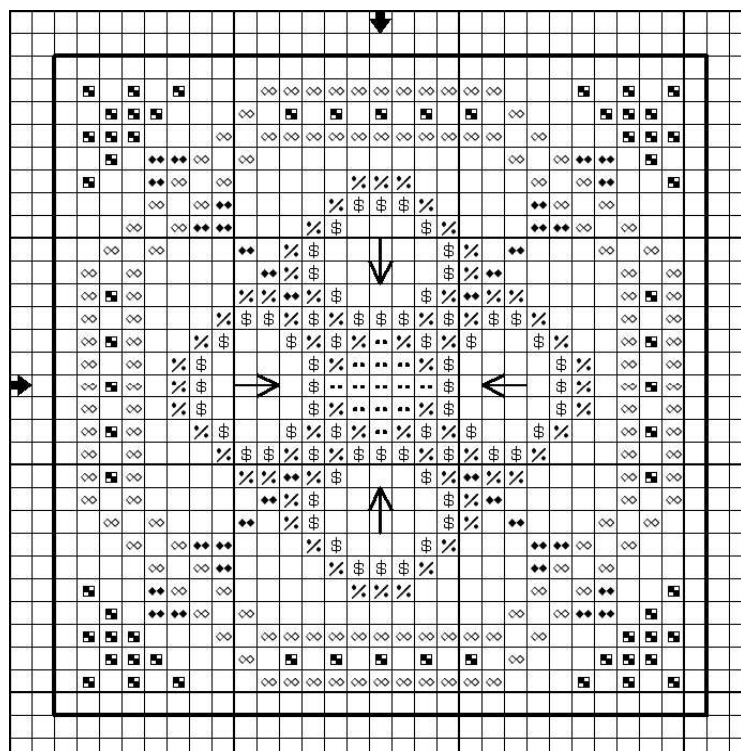
■	DMC 355	Terra Cotta-DK
◆◆	DMC 469	Avocado Green
◇◇	DMC 470	Avocado Green-LT
●●	DMC 729	Old Gold-MD
⋈	DMC 931	Antique Blue-MD
⋆	DMC 932	Antique Blue-LT
⋄	DMC Ecru	Ecru

*Dear Fellow Stitchers,
Here's my 4th gift to you that I hope you'll
enjoy. Don't forget to send me a photo of
your finished piece.*

*Happy Stitching,
Lody*

*More patterns at:
www.lodysc creations.com*

MAIN CHART



Stitching & Finishing Instructions:

1. Cut two pieces of 4 inches square 28 count white linen.
2. Work cross stitches with two strands of floss.
3. Following the arrow directions, work satin stitches using 2 strands of DMC ecru.
4. Work backstitch borders 1 stitch away from stitched edge, with 3 strands of coordinating floss or size #12 perle cotton.
5. Backstitch border of the backing material same size as the stitched or front piece. Size should be 29w x 29h stitches.
6. Using backstitched borders as guide, miter corners then finger press sides.
7. Place wrong sides together then start whipstitching at a corner of your choice using 3 strands of floss or size #12 perle cotton.
8. Leave the last side open for stuffing, then continue whipstitching once it's filled.
9. Make a buttonhole loop at one corner then attach a beaded hanger with lobster claw. *Optional hanger: Silk or satin ribbon.*