

# Timber Creek Needleworks

Counted Thread Designs by Lody Steward

## MG3 - FOB

Size: 27h x 27w stitches

### Symbol Keys

|   |          |                  |
|---|----------|------------------|
| ⌘ | DMC 470  | Avocado Green-LT |
| ∞ | DMC 3776 | Mahogany-LT      |
| # | DMC 972  | Canary-DK        |
|   | DMC ecru | Ecru             |

### Algerian Eyelet



DMC 3852

Straw-VY DK

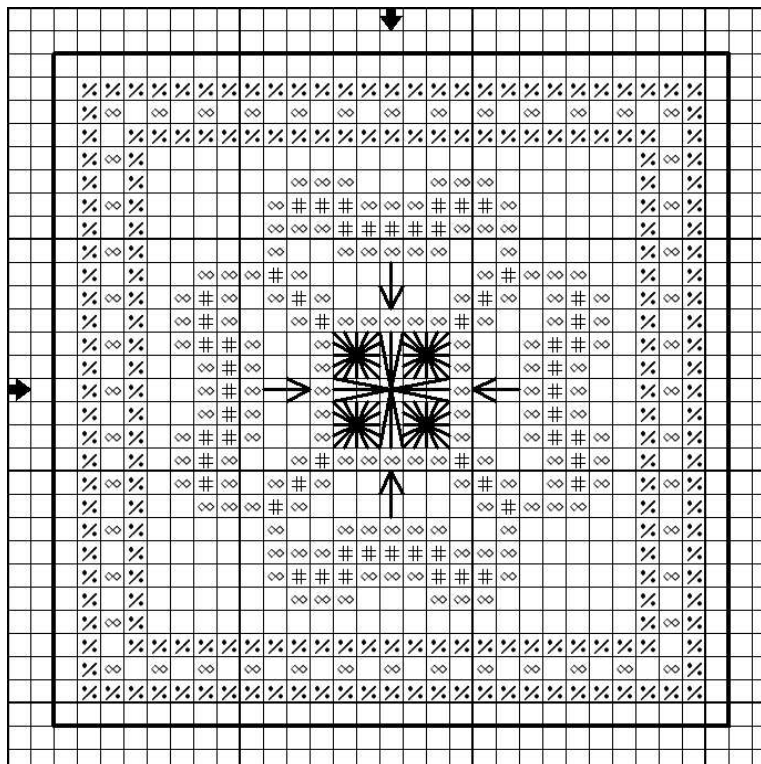
### Eyelet Stitch Variation



DMC 3852

Straw-VY DK

## MAIN CHART



Dear Fellow Stitchers,

Here's my 3rd gift to you that I hope you'll enjoy. Don't forget to send me a photo of your finished piece.

Happy Stitching,  
Lody

site: [www.timbercreekneedleworks.com](http://www.timbercreekneedleworks.com)

blog: [www.lodyscreations.blogspot.com](http://www.lodyscreations.blogspot.com)

### Stitching & Finishing Instructions:

1. Cut two pieces of 4 inches square 28 count white linen.
2. Work cross stitches with two strands of floss.
3. Work eyelet stitches using 2 strands of DMC 3852.
4. Following the arrow directions, work satin stitches using 2 strands of DMC ecru.
5. Work backstitch borders 1 stitch away from stitched edge, with 3 strands of coordinating floss or size #12 perle cotton.
6. Backstitch border of the backing material same size as the stitched or front piece. Size should be 29w x 29h stitches.
7. Using backstitched borders as guide, miter corners then finger press sides.
8. Place wrong sides together then start whipstitching at a corner of your choice using 3 strands of floss or size #12 perle cotton.
9. Leave the last side open for stuffing, then continue whipstitching once it's filled.
10. Make a buttonhole loop at one corner then attach a beaded hanger with lobster claw. *Optional hanger: Silk or satin ribbon.*