

Timber Creek Needleworks

Counted Thread Designs by Lody Steward

MG1 - FOB / MINI PINCUSHION

Size: 31h x 31w stitches

Symbol Keys

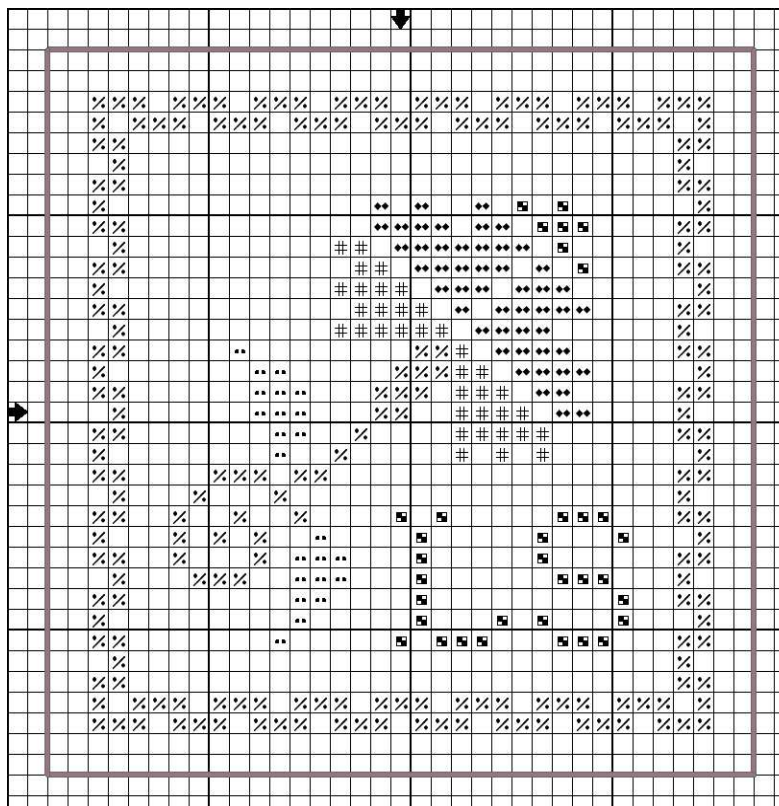
∕	DMC 469	Avocado Green
..	DMC 470	Avocado Green-LT
◆◆	DMC 3041	Antique Violet-MD
#	DMC 3042	Antique Violet-LT
■	DMC 3852	Straw-VY DK

Dear Fellow Stitchers,
Here's my first gift to you that I hope you'll enjoy. Model photo and freebie alphabet are posted at TCN blog - timbercreekneedleworks.blogspot.com

Happy Stitching,
Lody

site: www.timbercreekneedleworks.com
blog: www.lodyscreations.blogspot.com

MAIN CHART



© 2008 Timber Creek Needleworks & Lody Steward

Stitching & Finishing Instructions:

1. Cut two pieces of 5 inches square 14 count aida or 28 count linen.
2. Work cross stitches with two strands of floss.
3. Work backstitch borders 2 stitches away from stitched edge, with 3 strands of coordinating floss or size #12 perle cotton.
4. Backstitch border of the backing material same size as the stitched or front piece. Size should be 35 stitches x 35 stitches.
5. Using backstitched borders as guide, miter corners then finger press sides.
6. Place wrong sides together then start whipstitching at a corner of your choice using 3 strands of floss or size #12 perle cotton.
7. Leave the last side open for stuffing, then continue whipstitching once it's filled.
8. Finish the edges with ribbons (knotted at half inch interval) and beads for extra dimension!